



SAMARITAN
Counseling • Guidance • Consulting

Offering Hope and Healing

2018 ANNUAL REPORT

This report honors those who have a Samaritan's heart ...

those who have demonstrated caring deeply for others suffering with emotional, relational, or spiritual pain ...

whose generosity has supported compassionate care that has helped wounded people to heal, gain hope, and be empowered to change.

Thank you, Good Samaritans, for caring.



Luke 10:25-37

... But because he wished to justify himself, he said to Jesus, "And who is my neighbor?"

Jesus replied, "A man fell victim to robbers as he went down from Jerusalem to Jericho. They stripped and beat him and went off leaving him half-dead.

A priest happened to be going down that road, but when he saw him, he passed by on the opposite side. Likewise a Levite came to the place, and when he saw him, he passed by on the opposite side. But a Samaritan traveler who came upon him was moved with compassion at the sight.

He approached the victim, poured oil and wine over his wounds and bandaged them. Then he lifted him up on his own animal, took him to an inn and cared for him.

The next day he took out two silver coins and gave them to the innkeeper with the instruction, 'Take care of him. If you spend more than what I have given you, I shall repay you on my way back.'

Which of these three, in your opinion, was neighbor to the robbers' victim?"

He answered, "The one who treated him with mercy." Jesus said to him, "Go and do likewise."



Table of Contents

Greetings from our executive director	1
Who we are	2
Counseling	4-7
Guidance	9
Consulting	10
Where you'll find us	12
Areas where we grew	14
Making counseling affordable	15
Our 2018 Good Samaritans	16-19
Our people	20-21

Our Purpose

*For those who silently suffer
with emotional, relational,
or spiritual pain,
we offer compassionate care
that helps them heal,
gives them hope,
and allows them to change.*



Graham Standish, Executive Director,
and Carolyn Smith who served as our
2017-2018 board president

2019 Board of Directors

Elizabeth Szuba
President

Kim Cuneo
Vice President

Chris Standish
Secretary

Bethany Shreckengost
Treasurer

Karyn Brooks
Tricia Cattrell
Carroll Ferguson
Clair Kendrick, PhD
Dr. Michael R. Loughhead
Dr. Shelly McQuone
Rev. Sarah Robbins
George M. (Bud) Smith
Rev. Melissa L. Stoller
Karin Trauman

Graham Standish
Executive Director

Dear Good Samaritans:

As many of you know, I accepted the position as Samaritan’s executive director following Carl Baughman’s retirement in November of 2017. The past year at Samaritan has afforded me many blessings, challenges, and opportunities.

I’ve been blessed with a team of highly skilled and caring staff who share a passion for helping wounded people to heal. I’ve been challenged to bring new ideas to fruition, to forge a pathway that will take Samaritan to its next height. I’ve had opportunities to expand the education programs that we offer, especially to clergy and churches. An added benefit to this was familiarizing more pastors with the work that we do and the value that it brings to churches and communities.

The start of the New Year found us settling into our new headquarters on the third floor of Sewickley Presbyterian Church’s Faith House. This transition was possible due to the support of church members who so generously blessed us with their friendship and financial backing.

Shortly after my arrival, one of the first projects we embarked upon was creating a name change—from Samaritan Counseling Center to Samaritan Counseling, Guidance, Consulting—along with a new logo and website that reflect our mission, services and vision for the future.

We assembled a new board of directors comprised of 14 men and women who have demonstrated their commitment to Samaritan as people of faith, wisdom, and integrity. With their guidance, we formulated a plan to restructure our organization to improve its fiscal health, employee retention, and internal processes.

Finally, we opened two new offices—one at my previous ministry, Calvin Presbyterian Church in Zelienople—and the other one at Northminster Presbyterian Church in New Castle. We hope to open additional satellites this year, as well.

I look forward to what God equips us to do in 2019 and to sharing those blessings with you. Thank you, Good Samaritans, for being the longstanding strength and foundation of this ministry.

Blessings.

The Rev. Dr. Graham Standish, PhD, MSW, MDiv, MA
Executive Director

What we did in 2018

Changed our name and logo

Opened **2** new satellites

Hired **3** new therapists

Provided **92** hours of education and training

Provided **279.5** hours of consultation

Our top referral sources included:

1. Insurance Companies/ Employee Assistance Programs
2. Website/Media
3. Family/Friends
4. Clients
5. Pastors/Churches

Our Story

Who We Are

Founded in 1982, Samaritan Counseling, Guidance, Consulting is a non-denominational, faith-based nonprofit in Western Pennsylvania that provides holistic, psychological counseling.

We are a team of licensed therapists who counsel with compassion and listen without judgment. We are caring professionals who create safe places for people to share and find healing, regardless of their ability to pay.

What we do

Samaritan empowers people of all ages and from all backgrounds and faith beliefs to heal, grow, change, and become whole again.

Who we serve

We serve individual adults, children and teens, as well as couples, families, pastors, churches, and community groups.

Services we provide

- **Counseling** that is faith-based, holistic, and grounded in the best clinical practices available
- **Guidance** in the form of spiritual direction, anger management, and support groups
- **Consulting**, which includes training and coaching for pastors, and educational programs for churches and communities

How we impact lives

As therapists, we provide people the tools to thrive as positive thinkers, motivated employees, healthy families, and productive members of their communities.

As spiritually-focused teachers, we empower pastors to be healthier leaders of more vibrant churches.

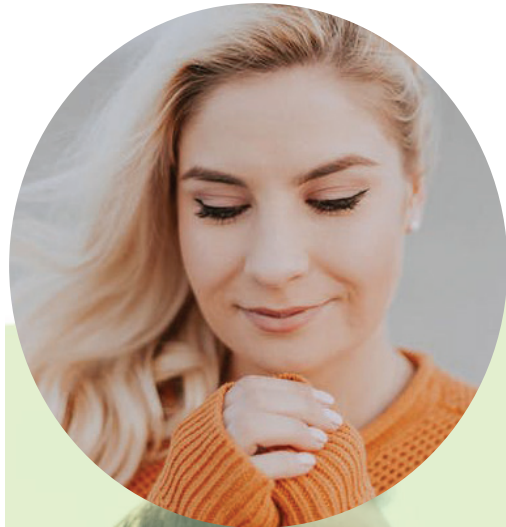
Providing Compassionate Care

for
**Adults,
Couples,
Children,
Teens,
and Families**



Counseling

Restoring Relationships Families



Families are complex systems. And when parents have an adult child who is struggling with life and still living in the family home, complex doesn't begin to describe their lives.

"Bill and Betty Smith" sought help at Samaritan to find ways to cope with some very tough issues. Married for 30 years, the Smiths reached a breaking point in dealing with their adult daughter, whom we'll call "Lynn."

Lynn was 22, had never been employed, and spent most of her time listening to music and playing games. But it wasn't because she lacked intelligence. Lynn clearly had mental health concerns, and had been seeing a psychiatrist off and on. School had been extremely hard for Lynn as a child. She had also been misdiagnosed as having borderline personality disorder—and her parents had agonized over her behavior for years.

Bill explained that he had encouraged Lynn to apply for jobs. Lynn responded that she had been interviewing, but the Smiths discovered that their daughter had been sneaking out to use drugs.

Betty was very distraught, adding that the last thing that Lynn needed was to become an addict. The couple's emotions had gotten the best of them; they began to attack and blame each other for the circumstances they found themselves in.

After a few sessions, the Smiths' counselor asked if she could meet Lynn. The couple agreed, and all three of the Smiths arrived for their next appointment.

Family counseling ensued for several weeks. The counselor met with the Smiths as a group, as well as separately. Then, something happened.

After listening to and observing Lynn, the family's counselor determined that she had a form of autism. This new diagnosis explained a lot—and it changed everything.

Samaritan believes in taking steps to ensure that clients are receiving the treatment they need at the appropriate level of care. Consequently, the Smiths' counselor referred Lynn to a psychiatrist who was familiar with the type of autism that she had. The combination of continued counseling and medication prescribed by the psychiatrist began to have a positive effect on Lynn.

The Smiths shared that things have improved a lot with Lynn and their family dynamics. But they realize there's still a long road ahead of them.

Lynn now has a part time job. Bill and Betty are working on resolving their anger problems and learning how to support their daughter. All three of them have made strides in the right direction.

This family has much work to do in order to heal from the past and cope with everything that lies ahead. It won't be easy, but we have faith that they are becoming a blessing to each other, rather than a burden.

My clinical training, experience as a social worker, and work as a pastor reinforces my belief that change is possible. I view the counseling experience as a partnership where together we explore, define and begin to move towards the goal of a healthier, happier and more complete life."

— Howard Irwin, Licensed Clinical Social Worker



Counseling

Tending to Hidden Wounds

Adults



“Mary” came from a strict Christian home but her father abandoned the family when she was very young. Physically abused by a step-father and unprotected by her mother, Mary grew up raising herself without any positive emotional supports or what a sense of being loved might feel like. So she filled her life with things that made her feel good: alcohol, food, relationships. Nothing sufficed.

When she came into counseling, Mary was frequently enraged by others, self-destructing, lost, angry with God, her spouse, and anyone she had ever felt close to. She was disgusted with herself.

Through the first 18 months, Mary acquired the ability to manage herself emotionally, to calm herself and check her perception of situations instead of over-reacting. This alone greatly improved her relationship with others.

She has begun to discover her strengths and assets and is now evaluating how she might develop a new vocational goal for herself. And instead of rejecting God she has arrived at the conclusions that He never abandoned her but affirms that she has the right to determine for herself how she wants to be in a relationship with Him. A new sense of spiritual existence has permeated her life and provided her with hope.

The work is not done. Mary has goals. She recently stated that “she no longer recognizes the person that came into therapy.” Samaritan has been her helper, but it is Mary who has done the work.

“Our clients’ past histories and future stories are firmly in God’s hands. My role is to offer professional help, encouragement, and counsel to them at this important time of their present need.”

– Tom Kneier, Licensed Professional Counselor



Mending Broken Hearts

Couples



“Meghan” called Samaritan for couples counseling because things were falling apart for her. Her brother had died six months previously from an overdose. It shook her world and her faith.

When it seemed like things couldn’t get any worse, she discovered a message on her husband “Harry’s” phone that indicated he was having an affair. When she confronted him, Harry said he was sorry and that he wanted to fix their marriage and end the affair.

At their first counseling session, Meghan said that although her Dad had called her “princess,” she felt she was living a nightmare, not a fairytale. Harry was filled with shame and regret. He realized that he hadn’t been a prince of a guy lately.

With their therapist’s guidance, the couple devised a plan. Harry promised to immediately cease all contact and social media with the other woman. He agreed to work on listening skills and how to be supportive of his wife, while Meghan agreed to address her grief. Together, they worked on communication, conflict resolution and rebuilding trust.

It wasn’t an easy process. Outbursts of tears and anger followed. But Meghan and Harry continued to work on their relationship—and it finally paid off. They improved their communication and learned healthy ways to address conflict. Foremost, they learned to trust each other and God again. It took 13 months, but Meghan and Harry successfully completed counseling. Although they regretted the pain that they had to go through, the couple revealed that their marriage was now stronger than it had been before.

Counseling

Healing the Hurts

Children and Teens

Samaritan's child and adolescent counselors recognize that Generation Z youth are growing up in a very complex society; their lives are plagued by matters that their parents and grandparents could not have ever imagined. Studies indicate that most kids today report higher levels of stress than adults, and describe their mental health as fair or poor. Their worries often include:

- Pressure to succeed in school, sports, etc.
- Struggles with social identity
- Uncertainty about the future
- Being bullied through social media
- School shootings and other issues in the news

"Where wounds shift from the physical to internal hemorrhages—these are the wounds therapists attend to on a daily basis. They not only affect the child's learning ability, concentration, and school attendance, but also they affect the way the child views him/herself in the community."

– Jamie Mehok, Licensed Professional Counselor

Wounded on the inside, children silently hurt from:

- Unresolved trauma
- Low self-esteem
- Gender confusion
- Physical, sexual, and/or verbal abuse

During sessions, our counselors create a sense of safety for kids of all ages. They nurture trusting relationships that let children know they're being listened to, cared about and understood. They know that they're at a place where they can talk openly, feel affirmed, and not be afraid.

"We believe that all children have a unique story to tell. We listen to their story, and we walk alongside them throughout their journey to wellness."

– Lynda Bradley, Licensed Professional Counselor

Guidance

Supporting the Journey

From Falling in Love with God, first published by Presbyterian Mission

Thought: What is Christian spirituality? It's very simple: falling in love with God so we can love others and ourselves. The moment we fall more in love with the Bible, the church, spiritual practices, worship, theology, or anything else that gets in the way of falling in love with God is the moment we lose our spirituality. READ entire article.

– The Rev. Dr. Graham Standish, Executive Director

Spiritual Direction

Did you know that spiritual direction dates back to ancient times and is practiced by all major world religions? Growing deeper in our faith brings us peace, joy, and a stronger sense of purpose for our lives. But there are times when we struggle with our faith—and that can be difficult to admit to others as well as to ourselves. Even members of the clergy face this struggle.

Men and women seeking spiritual direction at Samaritan have a unique opportunity. Whether they're experiencing problems, desiring to grow spiritually, or want to explore other faith-related issues, they can take comfort in knowing they've found a safe place to express themselves. Samaritan's spiritual directors are trained, experienced people of faith with whom clients can share their most personal, candid thoughts without fear of being judged or "preached" to.

Anger Management

In 2018, Samaritan ran 26 group sessions for people who sought help for managing their anger. Officially endorsed by the Allegheny County court system, our anger management program became a recognized resource for Greater Pittsburgh residents in critical need of treatment.

Meeting on a weekly basis for a total of 12 sessions, clients learned how to identify their triggers and express their anger in healthy ways. Taught by a licensed counselor specially trained in anger management, participants gained self-calming techniques, coping strategies, and the opportunity to share with others whose experiences were similar. In addition to receiving specific instruction, these men and women found help and encouragement from their peers as well as from their counselor.

Consulting

Serving Communities

Samaritan stepped up its efforts to serve as teachers, speakers, and resource providers. We connected with businesses, schools, churches, and other community groups, often partnering with other counselors and educators. Trauma, women and children’s issues, substance abuse, and compassion fatigue were some of the concerns we addressed.

Top right: **Graham Standish, Luci Ramsey, and Beth Healey** (seated) spent the day speaking with patrons at Burgh’ers restaurants in Harmony and Lawrenceville. Thanks to the owners of Burgh’ers, we not only made people aware of our services, but we also received 20% of the day’s sales.



Below: **Lynda Bradley** and board member **Karyn Brooks** (far right) participate in a domestic violence awareness program for women held at Washington and Jefferson College. Lynda had also delivered a presentation to the student audience, fielded questions, and provided a well stocked resource table.



Licensed Professional Counselor, **Lynda Bradley**, speaks to a pastors’ group on recognizing signs of trauma.



Caring for Clergy and Congregations

The Rev. Dr. Graham Standish wasted no time enhancing our services for clergy and congregations. Prior to accepting the position of executive director at Samaritan, Graham served as the senior pastor of Calvin Presbyterian Church in

By spring, he was teaching a clergy workshop on leadership, followed by a fall workshop on church transformation. Well attended by pastors of a variety of denominations, these programs offered practical tools, resources, and insights relevant to

support groups, presenting at the annual Pittsburgh Pastoral Care Conference, and networking with area judicatories. By the close of 2018, Graham’s teaching and relationship building efforts connected 60 pastors to Samaritan for clergy and congregational services.

Review submitted by Reverend **Billy Woodman**, Center Church EPC, Grove City, PA

I attended the ministry seminar “Leading a Church Through Transformation” led by the director of Samaritan Counseling, the Rev. Dr. Graham Standish. I highly recommend this class for pastors and ministry leaders. Graham comes from a unique perspective as an experienced and successful pastor, counselor and spiritual director. He addresses the challenges inherent in guiding a church or ministry through change on several levels: the pastor/leader, the congregational members, and the community. His strategy on addressing and overcoming resistance to change is worth the price of admission all by itself!



Graham Standish, executive director, teaches a workshop for pastors.

Zelienople for 22 years where he nearly tripled the membership. Graham’s success as a church leader, nationally known speaker, author, and authority on revitalizing churches paved the way for richer program offerings at Samaritan.

He introduced clergy coaching to help pastors to capitalize on their strengths and improve the health and vitality of their church, as well as themselves.

clergy in today’s ministry culture. He also added church consultation to Samaritan’s congregational services. This program empowers pastors to lead churches in the directions they envision. The service also includes performing church assessments and providing guidance to maximize the ministry’s strengths.

Graham continued Samaritan’s tradition of serving churches by speaking at worship services, leading pastor



Graham addresses the audience during a clergy conference.

Where you'll find us

We serve where we're needed

Below: Stepping out of the elevator, you enter our bright, welcoming waiting room on the third floor of Faith House.



Samaritan began 36 years ago with one employee and an office volunteer. Today, we operate out of 10 offices with a clinical team of 13 therapists, four directors, and two administrative support staff.

In late December of 2017, we moved our main headquarters across the parking lot from the lower level of the Sewickley Presbyterian Church into Faith House. The Church and another major benefactor underwrote the creation of this custom space for us on the building's third floor. The

space can accommodate up to five counselors in addition to our administrative staff members.

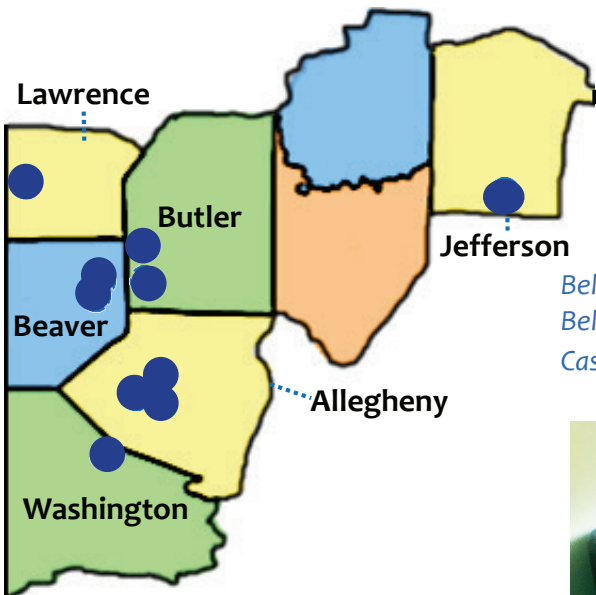
Owned by the Church, Faith House is also home to its youth activities and ministry groups. We continue to use space in the Church for accommodating larger groups for counseling and workshops. The advocacy and support of the Church continue to strengthen our ability to grow and serve.

In 2018, we opened our ninth and tenth offices in churches in Zelienople and New Castle. Our nine satellites are also hosted by churches whose leaders expressed the need for our faith-based counseling services for their congregation and community members.

As illustrated on the next page, our office locations span six Western Pennsylvania counties. Many of our therapists serve at multiple offices, allowing flexibility for scheduling clients during evening hours as well as on Saturdays.

Our Service Area:

10 Locations in six counties and growing!



Above: Faith House, owned by the Sewickley Presbyterian Church.

Below: Our host pastors and churches. Below: A cozy sitting spot at our New Castle office.



Below: One of our offices at Faith House.



Our Host Pastors and Churches

Rev. Kevin Long
Sewickley Presbyterian Church
202 Beaver Street, 3rd Floor
Sewickley, PA 15143

Rev. Robbie Manypenny
First Christian Church of Beaver
370 Iroquois Place
Beaver, PA 15009

Rev. Louise Rogers
Westminster Presbyterian Church
2040 Washington Road
Pittsburgh, PA 15241

Rev. Paul Becker Jr.
First Presbyterian Church of Bakerstown
5875 Heckert Road
Bakerstown, PA 15007

Rev. Doug Gebhard
Calvin Presbyterian Church
112 N. Division Street
Zelienople, PA 16063

Rev. Brandon Lenhart
North Main St. Church of God
1201 North Main Street
Butler, PA 16001

Rev. Greg Smith
First Church of God
23 Skyview Drive
Punxsutawney, PA 15767

Rev. Gregory Clagg
Grace Lutheran Church
393 Adams Street
Rochester, PA 15074

Rev. Dr. Stuart Broberg
Church of the Covenant
267 E. Beau Street
Washington, PA 15301

Rev. Jordan Rimmer
Northminster Presbyterian Church
2434 Wilmington Road
New Castle, PA 16105

How we did in 2018

Counseling Sessions:

Insurance or Self-Paid
5,914

Aid-Subsidized
1,208

Grand Total
7,122

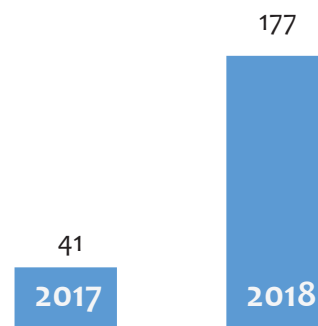
Other Sessions:

177 for spiritual direction
3 for coaching
26 for specialized groups
11 for couples' intensives*
(extended sessions)

Our Story

Areas Where We Grew

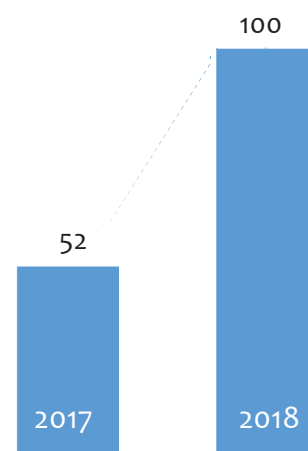
Spiritual Direction Sessions



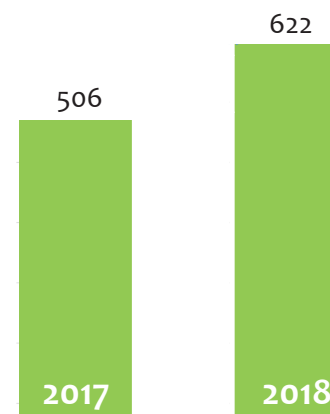
Left: With the addition of Dr. Standish, Samaritan gained a second spiritual director which resulted in a 330% rise in spiritual direction sessions.

Left, below: When we added two therapists who specialize in children and adolescents, we realized a 110% increase in subsidized sessions for youth in need.

Youth Subsidized Sessions



Adult Subsidized Sessions

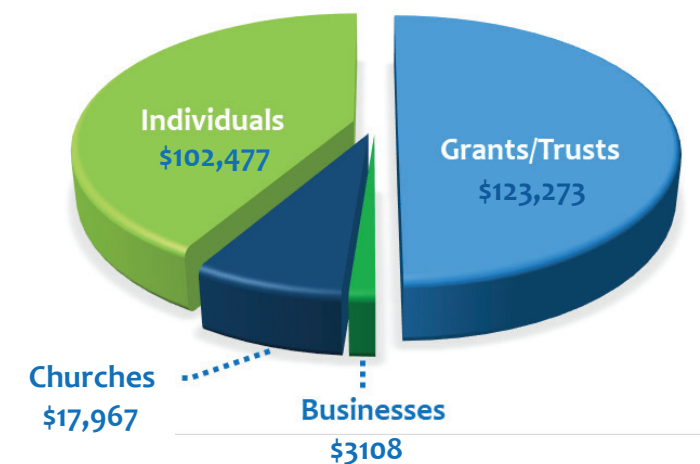


Above: We subsidized over 1,200 sessions for clients who were uninsured, under-insured, or otherwise qualified for financial aid.

Making Counseling Affordable

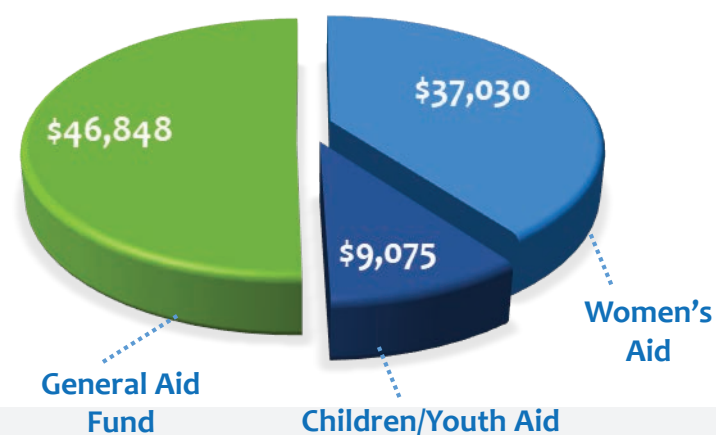
Below: Samaritan continued its vital tradition of raising funds to support counseling for clients who are struggling with financial hardships. The pie chart shows the amount of money we used from each of our three client aid funds to subsidize counseling fees.

Breakdown of Fundraising Revenue Streams



Below: Where our generous Good Samaritans came from.

Breakdown of Client Aid Expenses



How we did in 2018

Highlights:

Earned income totaling
\$474,415
in counseling fees

Yielded
\$246,825
via fundraising and grants

Extended financial aid totaling
\$92,953
to clients in need

2017 990 Tax form
2017 Auditor's report
GuideStar profile

**Our 2018
Good
Samaritans**



Hansen Foundation
Pitcairn-Crabbe Foundation
Graham and Diane Standish
William and Sandra Lambert
Sewickley Presbyterian Church
Anne L. and George H. Clapp
Charitable Educational Trust
Allegheny County Medical
Society Foundation



Thomas Marshall Foundation
Hawthorne PNC Family Wealth
Westminster Presbyterian Church
Mary Pontzer, MD
Chris Standish
W.P. Snyder III Charitable Fund
Community Presbyterian Church
of Ben Avon
Bobby and Shadley Gordon



John Oliver and Sylvia Dallas
BNY Melon Corporation's
Community Partnership
Women of Southwestern PA
St. Luke's Evangelical Lutheran
Church

Thank you for blessing others with hope, healing, and changed lives!

Hope Givers (continued)

Calvin Presbyterian Church
Thomas O. Hornstein Charitable
Fund
Leslie Moeller
Burgh'ers Brewing LLC
Kelly Barber
Simon Merrills
Matthew and Leslie Braksick
Kathy Smith
Peggy Standish
Patricia Cattrell
Renaissance Charitable
Foundation
Glenn Charitable Trust Fund
Anna Singer
Dollar Bank



Ken-Mawr United
Presbyterian Church
Anna Singer
Joel and Susan Young
Joan Musumeci
David Kaemmer
Network For Good
Carroll Ferguson
Karen Reinsel
Kim Cuneo
Daniel and Karen Blough
Robert and Mona Riordan
Michael Bryson
Timothy Gordon
Matthew Zack
Mark and Karen Trauman
June Nimick
Peter Standish
Ted and Jenna Stevenson
James Donnell



Bud and Carolyn Smith
Robert and Gretchen Burnham
Ann Turnbull
White Oak Springs Church
Brooks Family Foundation
Kathryn Kerg
Old Union Presbyterian Church
Mark and Karin Trauman
John and Nancy Bunce
Janet McGuire
Sharon Boschini
Rodney Smith
Neill Stouffer
Wayne Murphy
Laura Vassamillet
Peter and Stephanie Perry, MD
Kress Brothers
Richard and Keelie Garbee
Robert and Joan Peirce
Hanley Cox
Steve and Kathe Barge
Matthew and Sandy Cooper
Libby Lloyd
Lisa Guthrie
Timothy and Nancy Merrill
Jill Stehnach
Colvin and Madelaine McCrady
William and Linda Roemer
Salsa Labs, Inc.
Susanne Udvari
Thomas Stone
Paul Fagan
James Fagan
Brian Jeffe
Bill and Vicki Gass
Rev. Melissa Stoller
Eric Backstrom
Arthur Innamorato
Fidelity Charitable
Guyasuta Investment Advisors

Faithful Friends (continued)

Sheldon Sorge
Enscoe Long Insurance Group
Joseph Bielecki
Lannie Gartner
Gertrude File
Mario and Nathalie Lemieux
Kenneth and Nancy House
John and Gail Buchanan
Hal and Bobbi Bonnett
Anne Metcalf
Judith Baumgartner
Nancy Hansen
Robert Fisher
Arthur and Vicki Bomberger
George and Susan Craig
Neill and Shirley Barker
Jere Cowden
Michael and Linda Orsini
Robert Rath
Terri Hohmann
Margaret Scherbel
Mary Witul
Rita Randall
North Sewickley Presbyterian
Church
First Presbyterian Church of
Bakerstown Women
Jean Henderson
Franklin and Bonnie Blackstone
Kevin Flannery
Andrew Clem
Carl and Karen Baughman
Gregory and Susan Kaminski
Don and Jane Birnie
Rev. Beth Wierman
Thomas and Toby Graham
Bruce Leeman
PG Rentals
Joan Murdoch
William Vasiladiotis
William and Diane Shadle
Tom and Elizabeth Szuba

George Shannon
Jane Lavender
Jeff Turconi
Carolyn Jones
Richard and Sandy Gratton
Gwynne Jones
Robert and Karen Keller
Thomas and Jenny Hay
Timothy and Jeanne Bingman
Walter and Jan Gorr
Chuck and Ellen Knox
Alyson Barker
Joseph and Charlene Beck
Rev. Don Scandrol
Tom and Suzonne Smith
Bill and Melissa Cook
John, Jr. and Margaret Zimmerman
Lynn Holden
James and Joan Darby
Larry and Jane Rice
Dorothy Bower
Healthcare Management Advisors
Cordelia Jacobs
Susan Elste
Anne Gensheimer
Howard and Carol Irwin
Sylvia Lynn
Julie Kloo
Robert and Rosalind Kaliden-
Barry
Suzanne Fontecchio
Rev. Kevin and Rebecca Long
Darren Beck
David Sculley
Logan Kalweit
William Marks
Christa Tapert
The Demeis Revocable Living
Trust
David Martha Sandberg
Travis Windle
Rev. Tara Lynn
Christopher Wu

Bronson Smith
Robert Beilstein
Rev. Sarah Robbins
Agnes Peebles
William and Katherine Harbison
Diana Robinson
Ned and Judy Sherry
Helge Wehmeier
Daniel and Elaine Park
Barbara Thaw
Tina Thomas
Susan Meredith
April Winklmann
Georgiann Kralik
Gwynn Wardwell
Jeffrey Warren
Joseph Fagan
Susan Wardrop
Joseph Zanella
Michael Loughead
David Hartmann
Joseph Bozada
Natalie Frazier
Ilene Topper
Gail Neustadt
Frank Deluca
Karen Weiss
Patricia Neese
AnnaMarie Torres
Keith Rothfus
Kristin Daniels
Rebecca Kasavich
Craig Koryak
Janine Colinear
Michele Knoll
SS. Simon and Jude Catholic
Parish
Gregg Troian
Tyler Glenn
New Sewickley Presbyterian
Church
Justin McCarthy
Robert and Andrea Hayden

Faithful Friends (continued)
Elizabeth Allyn
Judy Angleberger
Verna Corey
MaryAnne Dornetto
Beth Rom
Joanna Diggins
Bonnie DiCarlo
Beth Tarasi
Sisters of Divine Providence
Mary Jeanne Hoover
Paul Olson
Charles Smith
Eaton Corporation Charitable Fund
Beth Healey
Amy Sarkett
Mary Jean Montag
Henry Herchenroether, Jr.
Elizabeth Linge
Joseph and Rita Hoepf
Donald Thomas
Carolyn Toth
Dale Patterson
Joe and Mindy Mathews
Alvin Backeris
Bob Niklewicz
Rob Brooks
Thom Roberts
Wendi Schlott
Linda Taylor
Sheila Scanlon
Brian McCormick
Glenis Levine
Liza Thornton
Laura Vickerman
Michael Majcher
Linda Farmerie
Susan Van Cleve
Betty Rich
Karen Sheie
David Dunkis
Thomas Johnson
Laura Stoller
Zoann Weckerly

Ethan Healey
Mary Louise Fowkes
Thea Stover
Catherine Dankosky
Jessica Standish
David Aloe
Katherine Panucci
Steffler Balsley
Dorothy Getty
John McCreary
Elizabeth Evans
Judy Pauls
Gayle Davis
Charlene Zeleznock
Douglas Christy
Jacqueline Cook
Debra Divosevic
Kathy Suhadolnik
MaryLou Flach
Matthew Fearing
Helen Mitchell
Ronald Charles
Matthew Doebler
Leona Tosatto
AnneMarie Gordon
Mai-Lan Fagan
Cora Gebhardt
Lauren Mizik
Linda Hedin
David Heidenreich
Amanda Backeris
Paul Nelson
Knights of Columbus Council 16351
Gerald Raith
Mary Cathey
Helen Miller
Pamela Squiers
Jason Head
Amanda Surratt
Gregory Gleason
Thomas Scannell
Rafelin O'Dell
Keith Boyer
Debora Rall

Velma Saire
Your Cause, LLC
Samuel Duerr
Dana Sweeney
Joyce Scalercio
Daniel Lynch
Suzanne Spelic
Marita Fagan
Lonnie Jantsch
Marvin Wedeen
Shareen Jordan
Yvonne Zier
Diane Burton
Summit Presbyterian Church
Robert Lazor
Jennifer Andrews
Mai Brown
Joyce Walkingshaw
Georgia Terrijoni
Lori Cangilla
Mary Anne Riley
Matthew Kurtas
Betty Blacka
Lisa Edelman
Barbara Ward
Leslie Connors
Donald DeFazio
Frank Masi
Linda Pell
Jenny Gallo
Jeff Eddings
Charisse Nixon
Mary Baird
Lindsay Koch
Kerry Ann Clawson
Michael Sommer
Jesben, LLC
James and Marie Campbell
Kim Bodnar
Donna French
Gregory Shipley
John Urda

Bud Smith
Lindsey Smith
Paul Szabolcs, MD
KD Van Drie
Laura Backstrom
Scott Dolfi
Tom DeFazio
Wayne Murphy
Art Bomberger
Mark and Karin Trauman
David Sculley
Brian Daniels
Michael Knaub
Sylvia Dallas
April Winklmann
Joel and Susan Young
Rev. Drs. Sheldon Sorge and Tammy Wiens
Tom Reinsel
Brian Edward
Ralph and Kelli Lowe, Jr.
Carla Sandy
David Johnson
Beth Tarasi, Tony Sinatra
Eric Stoller
Rev. JJ Lynn
Jonathan Gilliant
Steven Fagan
Chris Standish
Rev. Melissa Stoller
Rev. Tara Lynn
Mary Louise Fowkes



Good Samaritans in Aprons!

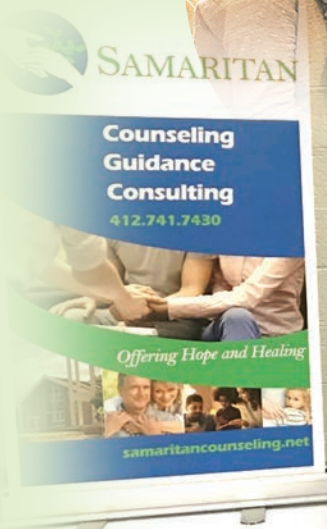
Below:
Fabulous Cook, Art Bomberger, served his amazing Croque-Monsieur Casserole.



Samaritan's oh so fabulous cooks assembled at the Sewickley Heights Golf Club and offered a smorgasbord of tastings to more than 200 guests. From gourmet seafood dishes to rich chocolate desserts, the foods and beverages were no less than outstanding. Kudos to our cooks (listed at left) for helping us raise over \$38,000!

Our People

Providing Compassionate Care



SAMARITAN
Counseling • Guidance • Consulting

Senior Staff

The Rev. Dr. Graham Standish PhD,
MSW, MDiv, MA
Executive Director

Beth Healey
Director of Development and Marketing

Lucinda Ramsey, MBA
Administrative Director

Susan Young, LPC, NCC, CEAP
Clinical Director

Administrative Support

Matthew Hickmott
Administrative Coordinator

Courtney Suckfiel
Billing Coordinator

Clinical Staff

Karen Blough, MA, NCC
National Certified Counselor

Lynda Bradley, MA, NCC, LPC
Licensed Professional Counselor

Judith Connor, MSW, LCSW
Licensed Clinical Social Worker

Kristen Drucis, MS, LMFT
Licensed Marriage and Family
Therapist

Jennifer Edmonds, MA, NCC, LPC
Licensed Professional Counselor

Robert Fisher, MSW, LCSW
Licensed Clinical Social Worker

Howard Irwin, MDiv, MSW, LCSW,
Licensed Clinical Social Worker

Jennifer Johns, MA, LPC
Licensed Professional Counselor

Tom Kneier, MA, LPC
Licensed Professional Counselor

Jamie Mehok, MA, LPC
Licensed Professional Counselor

Carla Sandy, MPA, LSW
Licensed Social Worker

Carol Stenger, MSW, LCSW, ACSW
*Licensed Clinical Social Worker,
Spiritual Director*

Ed Sutter, NCC, MEd
Youth Director Coach

Kimberly van Driel, STM, MDiv
Clergy Coach

Paul DeRenzo, MA
Therapeutic Resident Intern

Mary Pontzer, MD
Consulting Psychiatrist